



motoryacht
absolute king

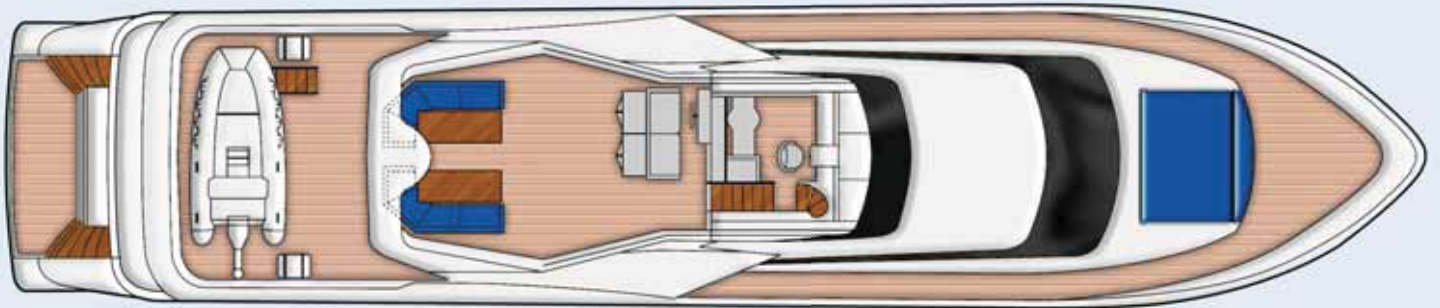
*The Optimum
in Yacht Cruising*



Variety Yachting



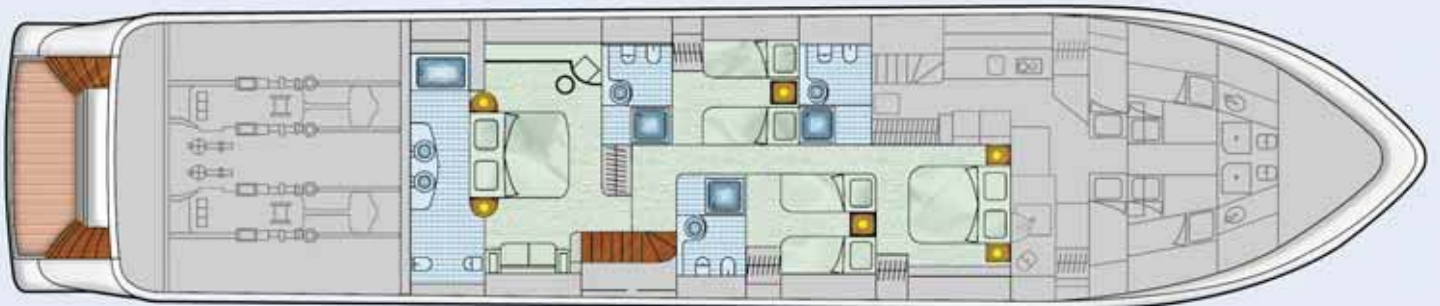
deck plans



Sun deck



Main deck

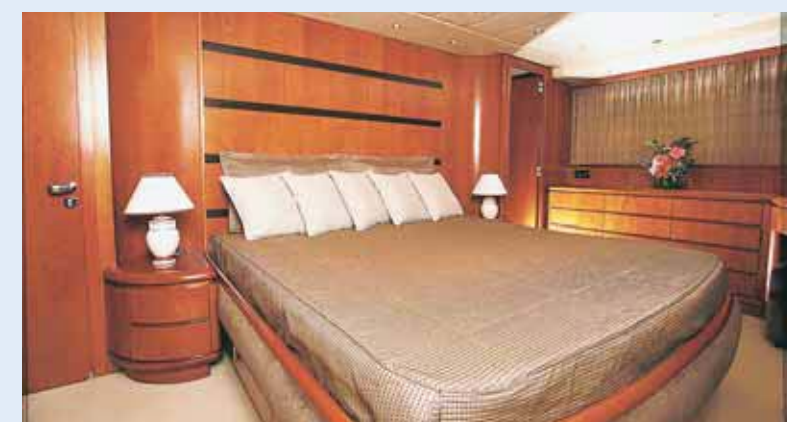


Lower deck





In the world of motor yachting the Falcon 100 is deservedly a byword for stylish and technical excellence. With her streamlined profile and dual MTU engines delivering a 27-knot top speed and boosting sumptuous internal fittings, the **ABSOLUTE KING** represents a unique blend of power and luxury. Experience the thrill of taking the helm on the flybridge with its state-of-the-art operation and navigation equipment, or just relax in the comfort of the **ABSOLUTE KING'S** Bimini – shaded sun deck and enjoy the beauty of the crystal waters and forested islands of maritime Greece.



absolute king

motoryacht

THE CABINS

The full width Master Stateroom features a queen size bed, a walk-in wardrobe, an en-suite bathroom, full air conditioning and audio/video entertainment center. Also on the Main Deck, the VIP Cabin's features include a queen size bed, a large wardrobe, an en-suite bathroom, a writing desk, full air conditioning and integral audio/video systems. As well as the VIP and Master cabins, the ABSOLUTE KING also offers one Double and two twin cabins, all with en-suite bathrooms, full air conditioning and hi-fi audio systems.

DINING ROOM – MAIN LOUNGE

With its gleaming exotic wood paneling, the opulent comfort of its leather upholstery and built-in hi-fi comfort and video entertainment, the spacious salon on the Main Deck offers the ultimate in shipboard relaxation. As throughout the ABSOLUTE KING'S interior the salon is full air-conditioned.

TOYS & WATERSPORTS

The large swimming platform is easily accessed to enjoy a full range of toys and water sports.



GENERAL INFORMATION

Builder:	Falcon – C.T.M. Italy
Length:	30.7 mt.
Beam:	6.45 mt.
Draft:	2.33 mt.
Hull:	GRP
Superstructure:	GRP
Gross Tons:	114 tons
MCA Status:	Commercial Registry
Crew:	7
Engines:	2 x MTU 1800
Range:	300 Naut. Miles
Cruising Speed:	25 knots
Top Speed:	27 knots
Fuel Capacity:	11,000 Lt.
Water Capacity:	5,000 Lt.
Watermaker:	Technicomar
Communications:	GSM G3 + WiFi VHF + SSB

CABINS & EQUIPMENT

10 Guests in 5 staterooms. Air conditioned throughout with individual climate control in each stateroom.

1 x MASTER:	Lower Deck, en-suite bathroom, king size bed, vanity, walk in closet, satellite TV, DVD.
1 x VIP:	Main Deck, en-suite bathroom, queen size bed, vanity, satellite TV, DVD.
1 x Double:	Lower Deck, en-suite bathroom, satellite TV, DVD.
2 x Twin:	Lower Deck, en-suite bathroom, satellite TV, DVD.
1 x tender with 90 Hp	
2 stroke outboard	
Various inflatables, one jet ski, waterskis, wakeboard, snorkeling equipment.	

Variety Yachting



Variety Cruises



A brand of

