



motoryacht
obsession

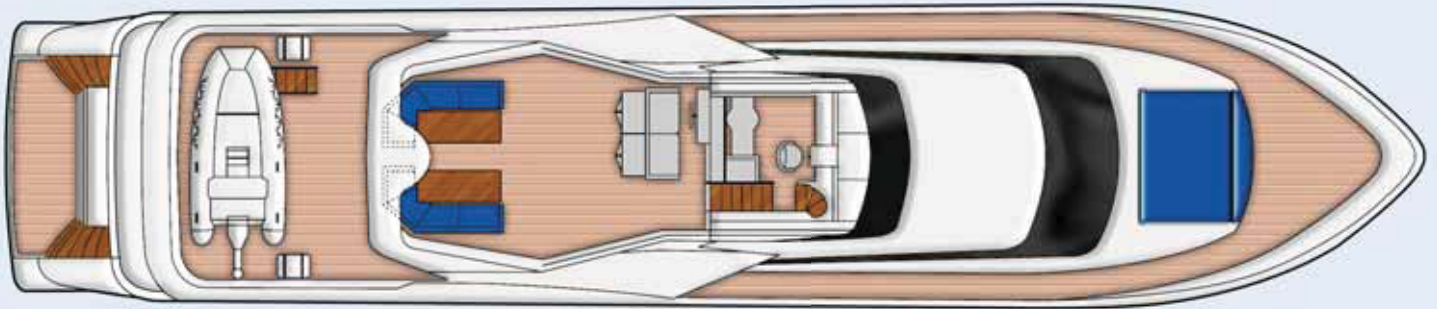
*The Optimum
in Yacht Cruising*



Variety Yachting



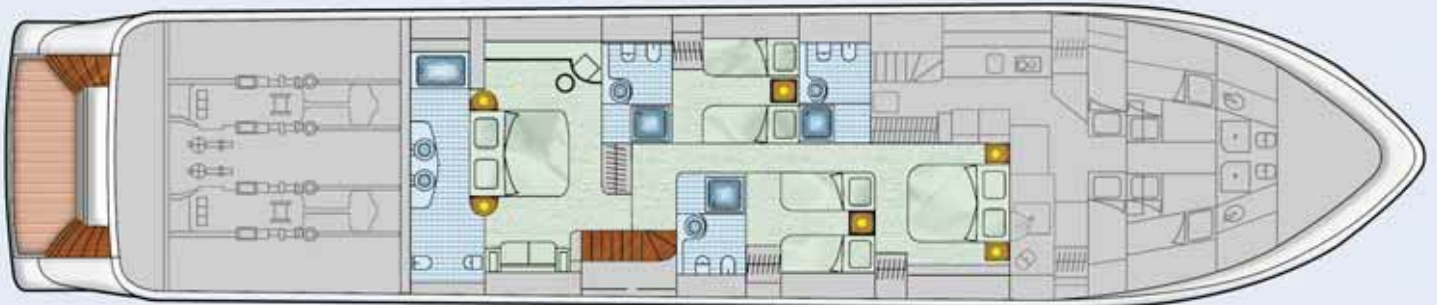
deck plans



Sun deck



Main deck



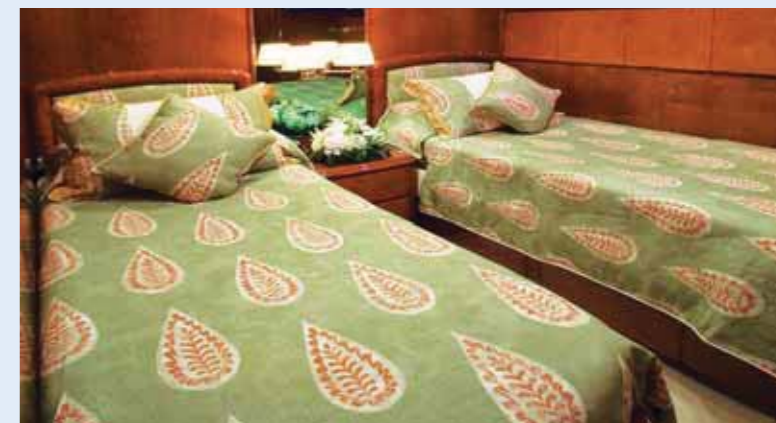
Lower deck





Both elegant and seaworthy, built with comfort in mind, she boasts a beautiful interior and accommodation, with superb deck spaces, the ideal yacht for an unforgettable experience.

Whether you prefer to cruise at full speed, lie at anchor in a secluded bay, or just relax and enjoy the first class service offered by her professional crew, OBSESSION offers easy outdoor living with unique alfresco dining on both the upper sun deck and the main aft deck.



motoryacht obsession

THE CABINS

Aboard OBSESSION, guests are pampered in comfortable staterooms (each with its own satellite TV, DVD and elegant ensuite facilities). The Master stateroom and en-suite bathroom situated on the Lower Deck, is full beam and boast a king-size bed, along with a complete entertainment center, including a large flatscreen equipped for individual satellite reception. The VIP staterooms and en-suite bathrooms situated on the Lower and Main Decks, are full beam and boast a queen-size bed, along with a complete entertainment center, including a large flatscreen equipped for individual satellite reception.

DINING ROOM – MAIN LOUNGE

The spacious main salon (fully air conditioned, as is the entire interior) is equipped with state of the art entertainment center, where you can enjoy the peace and the tranquility of the beautiful coastal surroundings. The dining room, the covered aft deck, or the comfortable Sun Deck invite you to relax while the highly trained Chef will surprise you with a variety of exquisite dishes.

TOYS & WATERSPORTS

The large swimming platform is easily accessed to enjoy a full range of toys and water sports.



GENERAL INFORMATION

Builder:	Falcon-C.T.M. Italy
Length:	30.8 mt.
Beam:	6.50 mt.
Draft:	2.33 mt.
Hull:	GRP
Superstructure:	GRP
Gross Tons:	114 tons
MCA Status:	Commercial Registry
Crew:	7
Engines:	2 x MTU 1800
Range:	300 Naut. Miles
Cruising Speed:	25 knots
Top Speed:	27 knots
Stabilizers:	Koornautic
Fuel Capacity:	11.000 Lt.
Water Capacity:	5.000 Lt.

Watermaker:	Technicomar
Communications:	GSM G3 + WiFi VHF + SSB

CABINS & EQUIPMENT

10 Guests in 5 staterooms. Air conditioned throughout with individual climate control in each stateroom.

1 x MASTER:	Lower Deck, en-suite bathroom, king size bed, vanity, walk in closet, satellite TV, DVD.
2 x VIP:	Lower & Main Decks, en-suite bathroom, queen size bed, vanity, satellite TV, DVD.
2 x Twin:	Lower Deck, en-suite bathroom, satellite TV, DVD.
1 x tender with 90 Hp	
2 stroke outboard	
Various inflatables, one jet ski, waterskis, wakeboard, snorkeling equipment.	

Variety Yachting



Variety Cruises



A brand of



Variety Cruises

Small Ships...Great Cruises!